



**GIRBAU**  
INDUSTRIAL™

# CONTINUOUS BATCH WASHING SYSTEMS

unrivaled productivity, efficiency and cleaning flexibility  
for laundries with medium- to large-volume needs

- Loading Systems
- Batch Washers
- Extraction Press
- Delivery Shuttles
- Pass-Through Dryers

LOADING SYSTEMS | BATCH TUNNEL WASHERS | WATER EXTRACTION PRESS  
DELIVERY SHUTTLES | BATCH PASS-THROUGH DRYERS

# CONTINUOUS BATCH WASHING SYSTEM



Among the most flexible laundering solutions available, Girbau Industrial's Continuous Batch Washing System delivers unrivaled productivity, energy-efficiency, programmability and results. Configurable to meet the laundering and volume needs of medium- to large-volume laundry operations, the Continuous Batch Washing System—in place across the globe—processes up to 3,000 pounds of laundry per hour using less labor, water and energy.

The system teams a Loading System, Batch Tunnel Washer, Water Extraction Press, Delivery Shuttles and Continuous Batch Pass-Through Dryers. Each machine in the system is seamlessly linked and automatically controlled by a highly programmable Batch Management Tool (BMT). All components can operate independently, together as a system, or seamlessly with other manufacturers' equipment, including bag-loading systems. The Girbau Industrial Continuous Batch Washing System delivers the ultimate in flexibility, efficiency and ease-of-use.

## LOADING SYSTEMS

**ICP-3 INCLINED CONVEYOR | ICP-4 INCLINED CONVEYOR  
HCP-4 HORIZONTAL CONVEYOR | BAG-LOADING SYSTEMS**

The Continuous Batch Washing System's Loading Conveyor automatically transports and loads laundry batches, by weight, into the Batch Tunnel Washer. The automatic weighing conveyors are available in three models—two for incline access, and one for horizontal access. Each of the conveyor's compartments holds 110-pound laundry loads.

The conveyors are simple to use:

1. One operator places goods into the conveyor's first compartment until the digital weight display on the control, or the color-coded light panel, indicates a full load.
2. Using the conveyor control, the operator inputs a washing program and customer number. The conveyor automatically moves the load into the Batch Tunnel Washer.



## CONTINUOUS BATCH WASHERS

**ECO TUNNEL | FLEXI TUNNEL | HYGIEN TUNNEL | MULTI TUNNEL**

Designed to meet any laundry need, Girbau Industrial Batch Washers deliver the ultimate in flexibility, efficiency and wash quality. Thanks to a convenient top-transfer, mono-block design, the TBS-50 Batch Washer is less costly and simpler to install than comparable machines on the market, uses less water and energy, runs quietly and delivers a quality wash for any fabric type. Designed for today and tomorrow, the TBS-50 is an extremely flexible tunnel washer that can be configured according to the unique needs of any high-volume laundry.





## WATER EXTRACTION PRESS

### SPR-50 (IN-LINE, RIGHT OR LEFT OUTLET)

Designed to press laundry batches processed in any type of batch washer, the SPR-50 Press optimizes subsequent drying and ironing—making them less time-consuming and more efficient. The press forms a round “cake” of laundry with a flat base. With high-capacity drainage facilities, water is extracted quickly and gently from all types of linen. The SPR-50 single-stage press is available in three different positioning options at the batch washer outlet: in-line, turns to the right, or turns to the left.

The SPR-50 water extraction press is durably constructed and factory tested for problem-free installation. Most of the SPR-50 Press electrical components are the same as those used in the TBS-50 Batch Washer and ST-100 Batch Dryer. They are interchangeable, facilitating easy and convenient servicing.



## DELIVERY SHUTTLES

### CEDD | CED

Shuttle Lifting Conveyors automatically move the pressed “cakes” from the Water Extraction Press into up to six open dryers. The Shuttle Lifting Conveyors—available to fit the specific needs of any high-volume laundry—feature 43.3 x 50.4 inch loading tables handling up to 220 pounds capacity each. Single- and double-cake conveyors are available to meet specific facility needs.



## CONTINUOUS BATCH PASS-THROUGH DRYERS

### ST-100 | ST-1300

Offering unsurpassed efficiency, productivity and ease-of-use, ST model dryers (ST-100 at 265-pound capacity and ST-1300 at 140-pound capacity) work seamlessly as part of the Continuous Batch Washing System. Each model offers Spirotilt Technology for automated unloading without dryer tilting. Once laundry “cakes” are loaded into the open dryers, they are untangled, conditioned and/or dried. Continuous Batch Pass-Through Dryers are available in natural gas, steam or thermal fluid heat.



“Now we are running an eight- or nine-hour day to accomplish what used to take a 16-hour day [using traditional washers]. We needed four to five people per shift to man the wash line before—to load and unload machines manually. Now, only one person is needed per shift because virtually everything is automated.”

– Rick Rone, Owner, Laundry Plus, Bradenton, FL

**CONTINUOUS BATCH WASHER**  
**KEY TO PRODUCTIVITY, EFFICIENCY AND RESULTS**

# TBS-50



Girbau Industrial Batch Tunnel Washers are the flagship of the Continuous Batch Washing System. Available in 5- to 12-modules, each with 110 pounds of capacity, it processes up to 3,000 pounds of laundry per hour! The Batch Tunnel Washer seamlessly and automatically integrates with loading and unloading conveyors, Water Extraction Presses and Dryers. Highly configurable, the Batch Tunnel Washer is ingeniously flexible to meet the labor, efficiency and productivity needs of virtually any medium- to high-production laundry operation.

Less costly and simpler to install than comparable machines on the market, the Batch Tunnel Washer uses considerably less water and energy, runs quietly, boosts productivity, cuts labor, and delivers a quality wash for any fabric type.

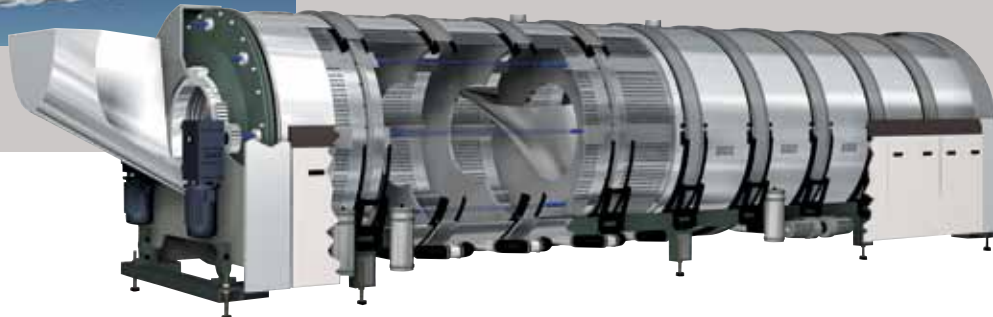
**FLEXIBLE TO MEET ANY LAUNDRY NEED**

The earmark of the Girbau Industrial Batch Tunnel Washer is its flexibility. Superior programmability along with its series of identical, highly flexible wash modules, allows for infinite configurability to meet specific laundry needs. Each module is individually programmable and can include inlets for water, chemicals, drainage, temperature probes and more. Steam inlets and chemical ports can also be added years after installation. Girbau Industrial's sales engineering team can custom configure the system's features at the time of order, or months or years after installation to meet future needs. Girbau Industrial's Batch Tunnel Washer is quite possibly the most flexible tunnel washer on the market.



### MODULAR DESIGN WITH INNER & OUTER DRUM

It features a modular inner and outer drum system with separate baths for each module—providing great efficiency and washing flexibility. The inner-outer drum construction of every module allows for total control over water temperature and levels, duration of the wash cycle, mechanical action, bath partitions, rapid draining, chemical injection, closing parameters and more. Moreover, each module is programmable to perform a complete bath exchange when necessary. By comparison, single-drum batch washers require more space and modules to properly wash laundry. Other manufacturers' single-drum washers also require preheating and do not allow for total control of chemicals, steam, baths and drainage in each module—limiting their flexibility.



### UNRIVALED MECHANICAL ACTION

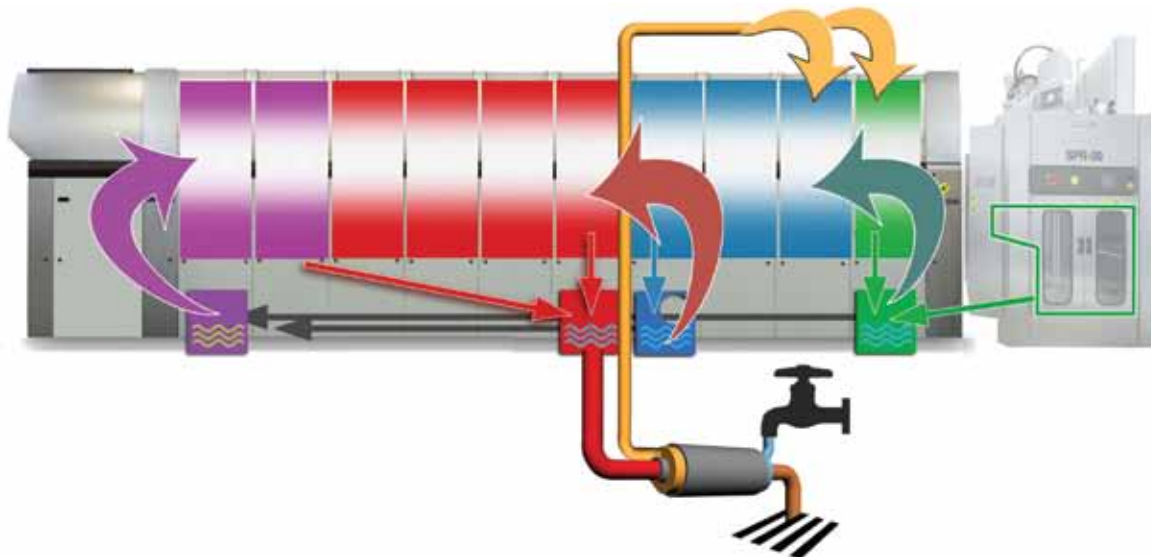
Superior mechanical action within each module ensures unrivaled cleaning results. By using the right mechanical action, water and chemical consumption can also be reduced. Thanks to its top-transfer design, the Batch Tunnel Washer delivers mechanical action similar to a high-performance, front-load washer. Goods are moved up and along the sides of the drum, using a maximum inversion angle of 270 degrees (inversion angle is programmable), before dropping to the bottom. Excellent mechanical action translates to a superior clean.

### TOP TRANSFER ELIMINATES MIXING OF BATHS FROM MODULE TO MODULE

The Batch Tunnel Washer features a wide, top-transfer opening at every module. This assures laundry passes from one module to another without mixing baths. During transfers from module to module, sensors monitor and confirm conditions are met for transferring the load without tie-ups. Our system never jams when operated according to manufacturer recommendations. Laundry progresses through each of the washer's identical 110-pound capacity modules, where it is soaked, pre-washed, washed and rinsed according to each precisely programmed module.

### REQUIRES LESS WATER AND ENERGY

The Batch Tunnel Washer reuses water at specific points during the wash process. The freshest rinse water is used on the cleanest linen to ensure pristine wash results. Once the linens are rinsed, the used rinse water is redirected to a holding tank and used a second time to wash another load of soiled linens. The Batch Tunnel Washer can recycle water up to three times.



### TRACEABILITY AND DISINFECTION

The Batch Tunnel Washer is configurable to properly clean and disinfect soiled goods—critical for laundry processed for hospitals, nursing homes and assisted-living facilities. Steam injectors and intermediate filter tanks work to ensure particles from the rinse cycle aren't recovered and reused during the wash process. The washer's independent water level and chemical modules totally permeate linens at the temperatures and conditions required to properly disinfect laundry. Each module has the option for a steam inlet, and the outer drums of each module ensure proper chemical dosing at every stage of the cleaning process. Chemical dosing and water are automatically adjusted to perfectly fit the load's weight—eliminating chemical overuse or underuse and resulting damage to fabrics.



### SUPERIOR CONTROL & PROGRAMMABILITY

Individually, the Batch Tunnel Washer is programmable by module for water temperature and levels, duration of the wash cycle, mechanical action, bath partitions, rapid draining, chemical dosing, closing parameters and more. Offering detailed management over the wash process, the control is easy to use and offers a clear graphic display showing real-time data. It allows users to manage more than 999 client accounts and offers 99 washing programs. Real-time data regarding the wash process is viewable from the main screen, and from easily accessed sub-screens: view program, customer, loads, water temperatures, chemical injection, cycle time and productions.

### GENTLE ON LINEN

Each module features a smooth drum surface and transfer blade for extended linen life. The funnel design of the drum's pressed perforations makes the surface smooth, without any rough edges to damage linen.

### REDUCED MAINTENANCE & INSTALLATION COSTS

When compared to other tunnels on the market, not only is the Girbau Industrial Batch Tunnel Washer less expensive to install, it requires less maintenance thanks to its unique design. It is transportable fully assembled within a single standard container or trailer—lowering shipping costs. Because it's pre-assembled, installation is completed in considerably less time—saving money. Its dual-drum design means the Batch Tunnel Washer uses considerably less space than single-drum models.

Thanks to straightforward engineering, the Batch Tunnel Washer is a proven performer requiring less maintenance—reducing downtime and production loss. The vortex-type pumps have no filters and do not, as a result, require filter cleaning like most tunnel washers. Additionally, the Batch Tunnel Washer's transmission features a centralized automatic lubrication system, minimizing maintenance, and the motor drive is externally located away from moist areas to eliminate breakdowns. The chassis is constructed with steel profiles finished in durable epoxy paint. Additionally, any materials that come in contact with laundry are constructed of AISI-304 stainless steel.



### REMOTE TECHNICAL SUPPORT FROM GIRBAU INDUSTRIAL

It's easier than ever to troubleshoot technical problems thanks to remote support. Remote support provides immediate online help, remote maintenance advice and distance troubleshooting. This service helps reduce downtime and lost productivity by getting your equipment up and running more quickly.



“When compared to our old bottom transfer tunnel, the Girbau Industrial Continuous Batch Washing System increased our laundry production to 3,000 pounds of laundry per hour; reduced our chemical consumption by 40 percent; and decreased our water consumption from 1.2 to .7 gallons per laundry pound versus our bottom transfer tunnel. The Girbau Industrial tunnel has been fantastic. In 13 years and thousands of operating hours, I’ve only done two upgrades.”

– Doug Gunderson, Owner, Gunderson Cleaners, Menasha, WI

## RECOMMENDED CONFIGURATIONS

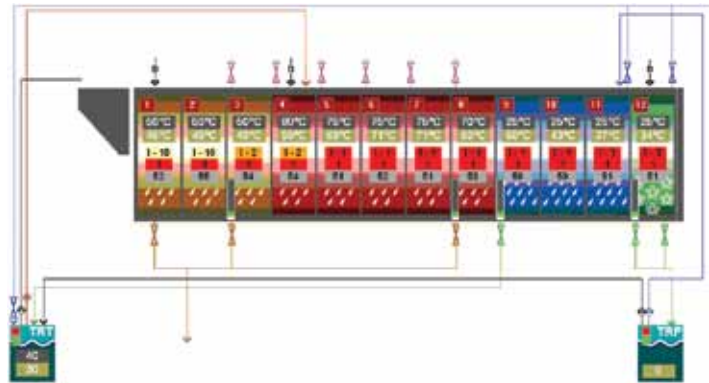
Girbau Industrial's Batch Tunnel Washer allows for infinite configurability to meet specific laundry needs. The configurations below can be customized at the time of order, or months or years after installation to meet future facility needs.



- MultiTunnel features:
- pneumatic drain valves
  - electronic water flow meters that control the flow of re-circulated and fresh water
  - thermostop feature to ensure linen transfer is not permitted until the programmed temperature is reached in the module
  - de-sanding feature that periodically empties the first module of sandy residues
  - two recovery tanks for water savings
  - steam injection options for wash modules
  - independent pre-wash, washing, rinsing and neutralizing phases

### MULTI TUNNEL

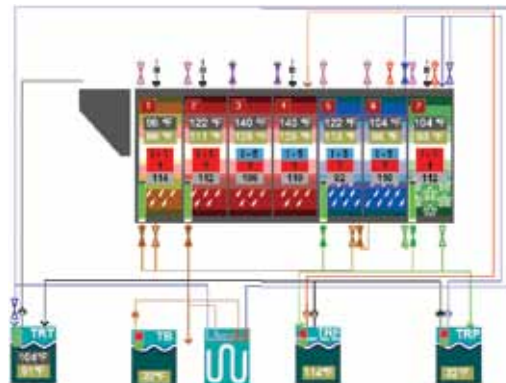
The multiTunnel is simple in its configuration, but delivers excellent efficiency, productivity, wash quality and labor savings. Appropriate for any industrial-sized laundry, the multiTunnel is efficient, flexible and delivers superior productivity with less labor.



- EcoTunnel utilizes all the same features as multiTunnel plus the following:
- four total water recovery tanks for maximum water savings
  - thermally insulated modules to retain heat
  - a Disinfection System that injects steam into all the modules while they are load-free
  - drain intercooler—a water heat exchanger system that uses the heat from drain water to preheat water coming into the tunnel

### ECO TUNNEL

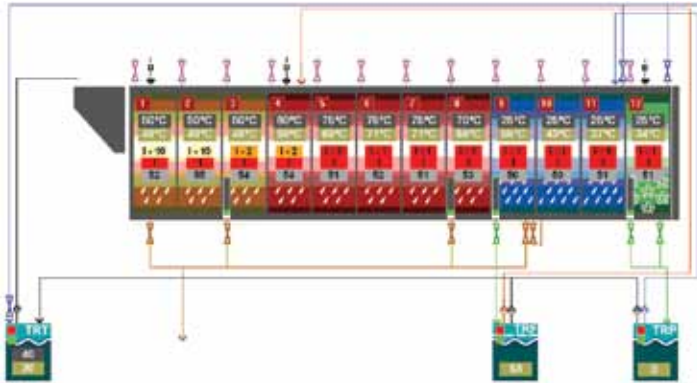
The configuration of the ecoTunnel combines advanced water and heat recovery technologies and control systems to maximize energy, natural gas, water and chemical savings. Configurable to meet the needs of a variety of industrial laundries, the ecoTunnel appeals to operations looking to cut energy usage and labor while dramatically boosting productivity. Natural gas (energy) consumption is slashed by 30 percent thanks to a drain intercooler that uses the heat from drain water to preheat water coming into the tunnel. Additionally, the ecoTunnel cuts water consumption by 20 percent when compared to other tunnel washers and by 80 percent when compared with front-load washers.





## HYGIEN TUNNEL

Configured to carry out intensive washing processes and disinfection for highly soiled goods, the hygieneTunnel is the perfect solution for processing healthcare laundry items. The hygieneTunnel features three water-recovery tanks that allow water to be recovered at high temperatures. One of the tanks utilizes a filter to prevent debris and colored particles from transferring to subsequent loads. All modules on the hygieneTunnel incorporate steam to aid in disinfection and are thermally insulated to retain heat. The Disinfection System injects steam into all of the modules while they are load-free. The hygieneTunnel maintains a temperature of 176° F (80° C) for a set amount of time to further aid in disinfection and features a vigorous rinse function for optimal cleanliness.

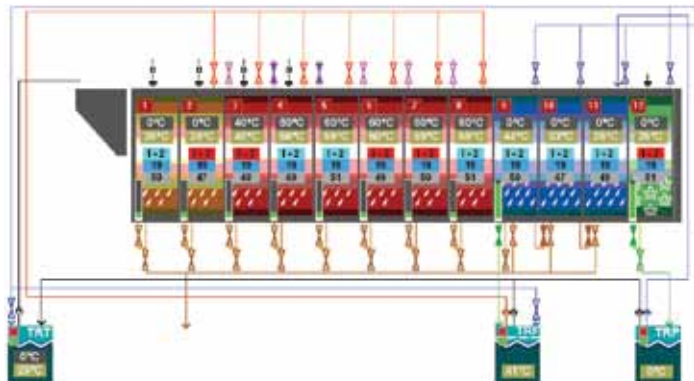


HygieneTunnel utilizes all the same features as multiTunnel plus the following:

- three total water recovery tanks, one with a filter for removing debris that allows for water to be recovered at a high temperature
- thermally insulated modules to retain heat
- an option for keeping the soaking phase separate from the pre-wash
- a vigorous rinse function to ensure the cleanliness of each load
- a Disinfection System that injects steam into all the modules while they are load-free

## FLEXI TUNNEL

The flexiTunnel is configured for ultimate versatility—allowing each module to be independently programmed according to specific needs. Each module is completely autonomous from the rest. The flexiTunnel is an exceptional choice for industrial laundries dealing with high levels of dirt or a range of different colors and fabrics. It's simple to use and ultimately flexible, making it possible to work with different baths, colors and chemicals, simultaneously.



FlexiTunnel utilizes all the same features as multiTunnel plus the following:

- three total water recovery tanks for maximum water savings
- each module can be independently programmed according to specific needs ranging from a pre-wash in the direction of the flow, a wash counter-flow, a rinse counter-flow, and even a wash for individual chambers.

**WATER EXTRACTION PRESS**  
OPTIMIZING DRY TIME THROUGH TECHNOLOGY

# SPR-50



Once laundry travels through the Batch Tunnel Washer, it arrives at the Press. The Water Extraction Press works by pressing up to 110 pounds of goods at a time into a round laundry “cake” with a flat base. This takes less than 2 minutes! With high-capacity drainage facilities, water is extracted from the linen quickly and gently, which significantly shortens subsequent dry time, and simultaneously, improves laundry productivity. Water extracted from the Press is redirected for reuse in the Batch Tunnel Washer.



#### **FLEXIBILITY & PROGRAMMABILITY**

Designed with a highly efficient oil dynamic circuit, the Water Extraction Press offers multiple hydraulic pressures from one to 40 bars to efficiently press goods from all types of batch washers. Highly programmable, it features 16 programs and control over pressure, pressure time, etc. This program flexibility enables the Water Extraction Press to efficiently press a vast array of fabrics. Optional software for variable pressure build up further enhances flexibility for pressing vapor barrier products and other delicate fabrics.

#### **CONFIGURABLE POSITIONING**

A single-stage press, the Water Extraction Press is configurable in three different positioning options at the Batch Tunnel Washer outlet: in-line, turns to the right, or turns to the left.



#### **BUILT TO LAST**

Durably constructed for years of trouble-free operation, the Water Extraction Press features a self-guiding system; reception basket guided on a single column for precise self-centering; a water filled membrane that delivers even cushioning during the pressing process; and a white membrane that is fully reinforced for long life and the rigors of constant use.

#### **SIMPLE INSTALLATION & MAINTENANCE**

The Water Extraction Press is factory tested which facilitates problem-free installation. Most of its electrical components are the same as those used in the Batch Tunnel Washer and Dryers facilitating easy and convenient servicing.

#### **OPTIONAL EXTRAS**

- special software that allows for variable pressure build-up (great for use with Gortex or other delicate fabrics)
- extended transport belt for special angle version



“I like everything about it. It operates off of steam, has a drain water heat reclaim system, filters, and then reuses 60 to 70 percent of the water. As the central component of the Continuous Batch Washing System, the tunnel reuses rinse and extracted water for pre-wash. Because water is recycled, less water is used and heated, lowering associated costs.”

– Mitch Wyatt, Owner, Quality Linen Services, Salisbury, MD

# CONTINUOUS BATCH PASS-THROUGH DRYERS

THE PERFECT COMBINATION OF FEATURES AND EFFICIENCY

## ST-1300 | ST-100

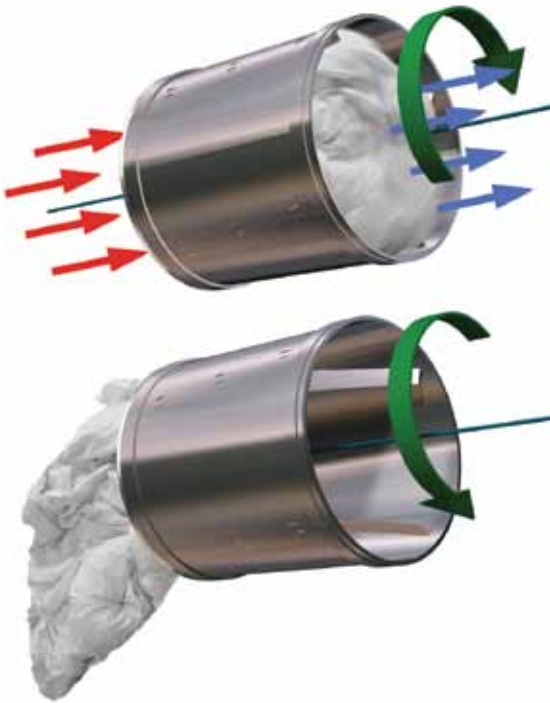


Offering unsurpassed efficiency, productivity and ease-of-use, ST model dryers (ST-100 at 265-pound capacity for double cakes and ST-1300 at 140-pound capacity for single cakes) work seamlessly as part of the Continuous Batch Washing System. Each model offers Spirotilt Technology for automated unloading without dryer tilting. Once laundry “cakes” are loaded into the open dryers, they are untangled, conditioned and/or dried. Continuous Batch Pass-Through Dryers are available in gas, steam, or thermal fluid heat and no heat tumble only.



## SPIROTILT TECHNOLOGY

A patented system, Spirotilt combines a slight drum incline with interior drum blades to ensure laundry items do not clump and bind during drying. Thanks to unique engineering, Spirotilt delivers automated unloading without dryer tilting. The Spirotilt system ensures the best combination of drying results and seamless unloading, with fewer moving parts and virtually no maintenance.



### THE DRYING PHASE

During the drying process, the dryer drum rotates on an incline in a clockwise direction. Blades inside the drum force laundry at the back of the cylinder toward the front, achieving proper load separation and even airflow through the load. The load is balanced along the length of the drum resulting in unmatched drying. Spirotilt does not use gaskets to facilitate the drying process, and as a result, eliminates unnecessary gasket maintenance.

### AUTOMATED UNLOADING

During the unloading process, the dryer drum rotates counterclockwise on the same incline. The incline of the drum works with the interior drum blades to move the load toward the bottom of the cylinder for automated unloading. Thanks to Spirotilt technology, air pollution production and heat loss are drastically minimized during the unloading phase.

### THE SPIROTILT DIFFERENCE

Unlike the ST-100 and the ST-1300, some dryers feature a drum that stays in the horizontal position to eliminate laundry clumping, but during the unloading process, use the airflow of the fan to unload the laundry. This system releases heat and lint into the laundry area and triggers unnecessary cool-down of the dryer. Other dryers are designed with a tilt system for unloading, but those require flexible gas, steam and exhaust connections that can lead to multiple breakdowns and leaks. Other models use gaskets to keep laundry balanced throughout the cylinder, but those gaskets require regular maintenance. The Spirotilt system ensures the best combination of drying results and seamless unloading, with fewer moving parts and less maintenance.

## AUTOMATED LINT FILTER CLEANING

All Girbau Industrial Continuous Batch Pass-Through Dryers feature automated lint filter cleaning that supports maximum airflow and quick, efficient drying. During the unloading process, if the system detects that the filter needs cleaning, it automatically activates the filter cleaning process and removes the lint to the exterior, without interrupting the drying process.

## PROVEN CONSTRUCTION, DURABILITY AND LONGEVITY

Girbau Industrial Dryers are designed for unmatched longevity. They feature steel sides finished in durable paint for corrosion resistance. Dryer components that come in contact with laundry are constructed of AISI-304 stainless steel to reduce friction—extending linen life. The robust drum, supported by a set of guide wheels, delivers silent operation and years of no-hassle use. As an optional feature, the drum's interior can be coated with Teflon® to prevent any plastics, inadvertently mixed with the laundry, from adhering to the drum as a result of high temperatures.

## OPTIONAL VACUUM LOADING

ST model dryers feature a patented Vacuum Loading System as an option for drying loads from open-pocket washers. The system allows operators to quickly load items without the need for a conveyor. A powerful suction pulls items inward, with no risk to attendants. In less than one minute, attendants fully load the dryer. From the same area, items are then automatically unloaded.

## INFRARED TEMPERATURE SENSING (Standard on gas, optional on steam/thermal fluid.)

Girbau Industrial's optional Infrared Temperature Sensing (ITS) system reduces over-drying and resulting fabric damage. It works by using sensors located at the dryer inlet and exhaust, and in the cylinder. The sensors monitor real-time temperatures throughout the entire cycle. When the load has reached its preset target level of dryness, the sensors shut the dryer off—saving energy, time and resulting labor costs.



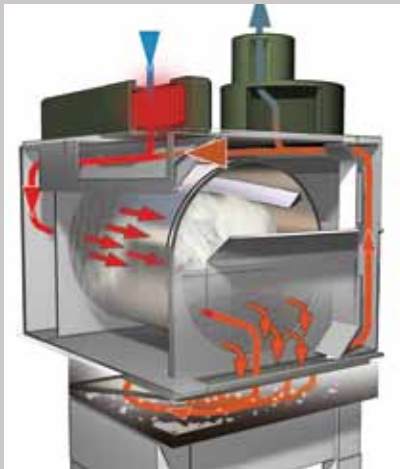
# ST-1300 FEATURES

Engineered for unrivaled ergonomics, energy-efficiency and productivity, the ST-1300 dries a single “cake” of up to 140 pounds of laundry in less than 15 minutes.

## AXIAL FLOW

While other dryers lose about 30 percent of the hot air between their inner and outer drums, the ST-1300’s patented Axial Flow system ensures that 100 percent of the dryer’s hot air passes through tumbling linen—resulting in unrivaled drying times and efficiency.

The Axial Flow system also results in lower drum temperatures compared with radial flow dryers and reduces cooling phase time by as much as 50 percent. Because the drum sides do not have perforations, it delivers gentler treatment of loads, less fabric wear, and longer linen life.



## ECOFLOW

Contributing to the ST-1300’s energy-efficiency is EcoFlow, an integrated airflow recirculation system (natural gas models). EcoFlow recirculates airflow during the drying cycle to achieve optimum performance. By recirculating approximately 80 percent of the nominal airflow, which is at a high temperature, significant energy savings are realized.

## ATMOSPHERIC BURNER

Integrated into the ST-1300 is an atmospheric burner, which smartly modulates heating power according to the needs of each drying phase cycle.

## INSTALLATION SENSE

Designed to make the most of available space, multiple ST-1300s can be installed side-by-side without space between each dryer. Maintenance is conducted at the front and back of each dryer.

## PROGRAMMABILITY

Boasting a highly flexible control, the ST-1300 offers 36 different programs, of which seven are pre-programmed. The control features a color touch-screen with easy-to-use graphic icons. Each phase can be programmed to control time, temperature, counterclockwise or clockwise rotation, speed, and all unloading variables.

## PEDESTALS TO ADJUST DRYER HEIGHT

Six differently sized pedestals can be used to adjust the height of the dryer according to the needs of the facility.



# ST-100 FEATURES

The ST-100 Dryer is engineered to unbind, condition and completely dry double-cake loads of up to 265-pounds, using less energy. Its robust heating system effectively circulates air through laundry for a quicker dry. Available in gas, steam, thermal fluid and no-heat tumble only, ST-100 Dryers are in place across the globe.

## RADIAL AIRFLOW & QUICK-DRYING CONVENIENCE

The ST-100 is designed with radial airflow—a system that captures heated intake air and distributes it evenly throughout the entire drying cylinder. Radial airflow ensures maximum load separation for big loads and bulky items and utilizes the tumbler's complete capacity for quick, even drying. As heated air is released from the top of the basket, linens, which are rotated from the bottom to the top of the basket, fall and separate throughout the entire cylinder. As linens fall and separate, heated air is pushed through and around the load—eliminating hot and/or damp spots in the load and expediting the drying process.



## MODULATING BURNER SYSTEM

The ST-100 (gas model) features a modulating burner system in which the flame self-adjusts to appropriate heating demand—lowering energy consumption and resulting utility costs.

## HIGHLY PROGRAMMABLE

With 16 drying programs offering eight programmable phases, the ST-100 delivers the ultimate in programmability to meet the specific needs of any linen type. Each phase can be programmed to control time, temperature, rotation, speed, and all unloading variables.

## COOL-DOWN CONTROL

During cool-down, a thermostat controls the opening and closing movements of a large flap that introduces cool air into the drum to cool linen (optional in steam and thermal fluid).

## DRUM SUPPORT

The robust drum, supported by a set of guide wheels, not only delivers silent operation, it ensures years of no-hassle use.

## PEDESTALS TO ADJUST DRYER HEIGHT

Four differently sized pedestals can be used to adjust the height of the dryer according to the needs of the facility. The tallest pedestal height provides the best conditions for unloading.

## BATCH MANAGEMENT TOOL CONTROL FLEXIBILITY LIKE NO OTHER

# BMT

Every facet of the Continuous Batch Washing System is programmed and controlled from the Batch Management Tool (BMT), which allows for 99 individual programs and detailed adjustments of different operations of every component of the laundry processing system. The BMT oversees the operation of every laundry system component, including the Loading Systems, Batch Tunnel Washers, Water Extraction Press, Delivery Shuttles and Continuous Batch Pass-Through Dryers. An Ethernet-type industrial network centralizes the information from all system components and details the information on a computer display for easy management and control.

### PRODUCTION MANAGEMENT IN A GRAPHIC ENVIRONMENT

The BMT's graphic management system allows operators to select different management options with a simple click of a mouse—providing quick and easy control over every facet of the laundry system. The BMT can be located in a remote location away from equipment, such as in a manager's office, and provides essential information for managing costs, production and programs, as well as identifying clients. The BMT also allows the manager to make changes to equipment formulas and save those changes to apply at a later time.

### BMT PROCESSING REPORTS/DATA IN REAL TIME

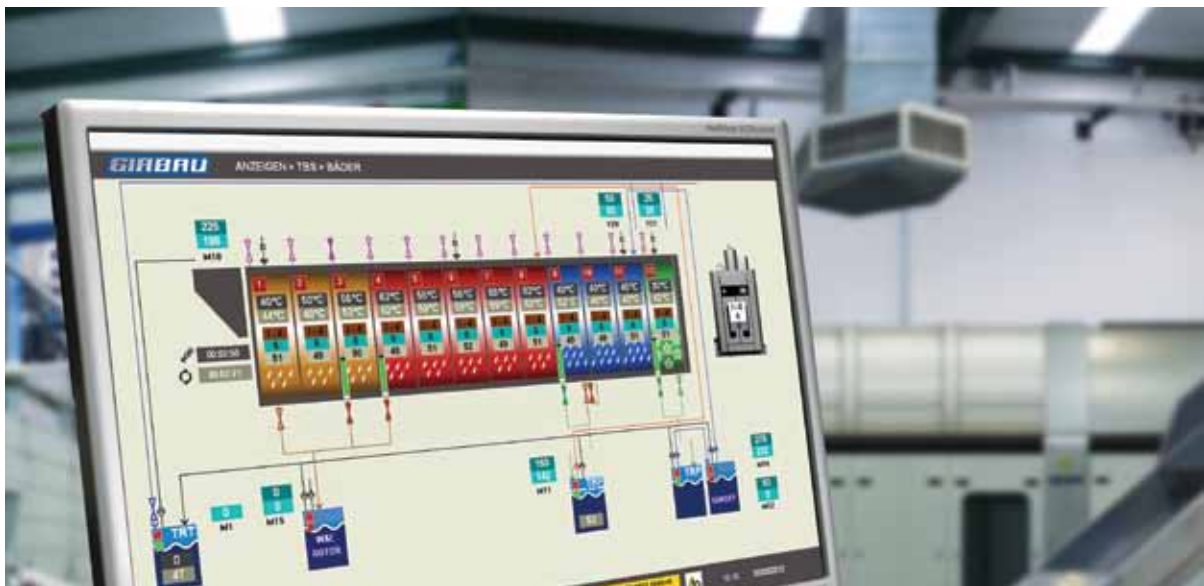
The BMT allows users to run control reports detailing production summaries, temperature, dosing, pump flow, mechanical action/cycle, press pressure, drying programs, customer screen descriptions, diagnostics, records of alarms and more. All data is exportable in spreadsheet form using MS Excel.

### BMT VISION

Using the BMT, it's simple to see where customer-owned goods are located in the laundry process. The graphic display offers color-coding by customer and icons that are simple to understand. The color, touch-screen display shows production details for each element of the batch washer: times, temperatures, weights, customer name, dosage, etc.

### BMT & EFFICIENCY

The BMT allows accurate adjustment of gallons of water used per linen pound during each phase (pre-wash, wash, rinse and neutralize). Maximizing water efficiency, the BMT checks the water-per-pound ratio to ensure it matches the programmed formula. Additionally, the BMT dispenses chemicals in exact programmed doses.







“Unlike most of our competitors, we provide rental service, as well as service for clients with customer-owned goods. Our tunnel system is programmable by customer, so items can be properly cleaned according to each client’s unique needs.”

– Mitch Wyatt, Owner, Quality Linen Services, Salisbury, MD

THE RIGHT EQUIPMENT MAKES ALL THE DIFFERENCE

# PRODUCT SPECIFICATIONS



## WATER EXTRACTION PRESS

MODEL		SPR-50
Capacity (dryweight load)	lbs. (kg.)	110 (50)
Cake Diameter	in. (mm.)	39.4 (1000)
Net Weight	lbs. (kg.)	26455.5 (12000)
Crated Weight	lbs. (kg.)	26896.4 (12200)
Machine Dimensions (WxDxH)	in. (mm.)	72.1 x 81.3 x 134.6 (1831 x 2065 x 3418)
Pressure Range	bar	1-40
Maximum Pressure	bar (PSI)	40 (508)
Minimum Cycle Time	seconds	90 (at 27 bar)
Nominal Cycle Time	seconds	100 (at 40 bar)
Drain Diameter	in. (mm.)	5.1 (130)
Water Cooling Connection	in. (mm.)	1/2 (14)
Water Cooling Flow	cfm (m³/h)	1.75 (3)
Water Cooling Pressure	PSI (bar)	43.5-174 (3-12)
Compressed Air Connection	in.(mm.)	1/2 (14)
Compressed Air Flow	gal/min (l/min)	14.3 (52.8)
Electrical Power	H.P. (kW)	22.8 (17)
Available Voltages		220-480/50/3 220-480/60/3

## SHUTTLE LIFTING CONVEYORS

MODEL		CED/CEDD
Machine Width	in. (mm.)	66.9 (1700)
Machine Length	in. (mm.)	59 (1500)
Machine Height	1050 1205 1455 1955	in. (mm.) 137.4 (3490) 143.7 (3650) 153.5 (3900) 173.2 (4400)
Maximum Load	CED CEDD	lbs. (kg.) 220.5 (100) 441 (200)
Minimum Loading Height	lbs. (kg.)	15.75 (400)
Length of Loading Table	lbs. (kg.)	51.2 (1300)
Width of Loading Table	in. (mm.)	39.4 (1000)
Horizontal Movement Speed	m/min	28
Vertical Movement Speed (60Hz)	m/min	9.4
Belts Movement Speed (60Hz)	m/min	20
Electrical Power	kW	1.8
Electrical Consumption	kWh	<1
Available Voltages		400/60/3

\* Product specifications are subject to change without notice. For the most current specifications please contact Girbau Industrial at (800) 256-1073 or visit [www.girbauindustrial.com](http://www.girbauindustrial.com).



**BATCH TUNNEL WASHER**

MODEL		TBS-50/5	TBS-50/6	TBS-50/7	TBS-50/8	TBS-50/9	TBS-50/10	TBS-50/11	TBS-50/12
Capacity (per cylinder)	lbs. (kg.)	110.2 (50)							
Outer Cylinder Diameter	in. (mm.)	76.8 (1950)							
Inner Cylinder Diameter	in. (mm.)	72.8 (1850)							
Cylinder Depth	in. (mm.)	30.7 (780)							
Cylinder Volume	cu. ft. (dm. <sup>3</sup> )	74.2 (2100)							
Number of Wash Lifters		7							
Washing Angle		270°							
Transfer Diameter	in. (mm.)	33.5 (850)							
Transfer Angle		450°							
Net Weight	lbs. (kg.)	12,677 (5750)	13,889 (6300)	15,101 (6850)	16,314 (7400)	17,526 (7950)	18,739 (8500)	19,951 (9050)	21,164 (9600)
Max. Working Weight	lbs. (kg.)	19,841 (9000)	22,487 (10,200)	25,132 (11,400)	27,778 (12,600)	30,423 (13,800)	33,069 (15,000)	35,714 (16,200)	38,360 (17,400)
Machine Width	in. (mm.)	85 (2160)							
Machine Length	in. (mm.)	214.5 (5448)	245.4 (6232)	276.2 (7016)	307.1 (7800)	338 (8584)	368.8 (9368)	399.7 (10,152)	430.6 (10,936)
Machine Height	in. (mm.)	112.1 (2848)							
Opening Height	in. (mm.)	30.6 (777)							
Washing Speed	rpm	2-8							
Max. Pressure to Floor	PSI (kg./cm. <sup>2</sup> )	313 (22)	341 (24)	370 (26)	412 (29)	441 (31)	469 (33)	498 (35)	526 (37)



## BATCH PASS-THROUGH DRYERS

MODEL		ST-1300	ST-100
Capacity	lbs (kg)	up to 140 (63)	up to 265 (120)
Cylinder Diameter	inch (mm)	50 (1270)	57.9 (1470)
Cylinder Depth	inch (mm)	39.4 (1000)	59.1 (1500)
Cylinder Volume	cu. ft (dm <sup>3</sup> )	44.7 (1267)	89.9 (2545)
Net Weight	Thermal Fluid/Gas/Steam No Heat Model	lbs (kg)	3307 (1500)
			2866 (1300)
Machine Width	Thermal Fluid/Gas/Steam No Heat Model	inch (mm)	68.5 (1739)
			63.8 (1620)
Machine Depth	inch (mm)	81.6 (2072)	96.9 (2460)
Machine Height (without pedestals)	Thermal Fluid/Gas/Steam No Heat Model	inch (mm)	119.4 (3032)
			86.1 (2188)
Pedestal Heights	inch (mm)	23.4 / 32.6 / 38.7 / 48.6 / 58.2 / 68.3 (595 / 830 / 985 / 1235 / 1480 / 1735)	32.6 / 38.7 / 48.6 / 68.3 (830 / 985 / 1235 / 1735)
Electricity	Thermal Fluid/Steam Gas No Heat Model	kW	8
			5.24/8.5
			2.49
Circuit Protection	Thermal Fluid	208-240/60/3	25
		380-480/60/3	16
	Gas	200-208/60/3	—
		208-240/60/3	25
		380-480/60/3	16
	Steam	460-480/60/3	—
		200-208/60/3	—
		208-240/60/3	25
		380-480/60/3	16
	No Heat Model	440/60/3	—
		460-480/60/3	—
		208-240/60/3	16
		380-480/60/3	16
	Exhaust Diameter	inch (mm)	15.75 (400)
Exhaust Air Flow	Thermal Fluid/Steam Gas	cfm (l/s)	4708.6 (2222)
			4708.6 (2222)
Thermal Fluid Connection	inch	2-1/2	2-1/2
Thermal Fluid Consumption	cfh (m <sup>3</sup> /h)	1059.3 (30)	1059.3 (30)
Gas Connection	inch	1-1/4	1-1/4
Gas Heating	Propane Natural	BTU/h (kW)	590,826 (173)
			577,165 (169)
Steam Connection	inch	1-1/2	1-1/2
Steam Condensate Outlet	inch	1	1
Steam Heating	BTU/h (kW)	512,277 (150)	1,074,780 (315)
Steam Consumption	lbs/h (kg/h)	485 (220)	1102.3 (500)
Compressed Air Connection	mm	10	10
Compressed Air Flow	gal/h (l/h)	39.63 (150)	39.63 (150)



“Since installing the Girbau Industrial Continuous Batch Washing System, water usage has dropped from 3.5 gallons to .6–.7 gallons of water per laundry pound.”

– Rick Rone, Owner, Laundry Plus, Bradenton, FL

## THE COMPLETE LAUNDRY SOLUTION

Girbau Industrial delivers the total laundry solution to medium- to high-volume laundries around the world. As the developer of a proven line of batch tunnel washers, presses, dryers, ironers, feeders, folders, stackers and loading and unloading systems, Girbau Industrial serves the complete laundry production and efficiency needs of virtually any application. Proven durable and reliable, Girbau Industrial laundry systems are in place at hospitals, hotels, casinos, resorts and industrial laundries across the globe.

## SIZING AND CONFIGURATION

Every laundry operation is unique, with a distinctive set of production and efficiency goals. Uniquely, the Continuous Batch Washing System offers the flexibility and configurability to meet any need—boosting production and lowering labor, water and energy usage. Our team of Girbau Industrial experts will help you, every step of the way, to properly size, design, configure and install your System.

## WARRANTY

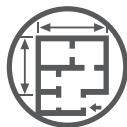
Girbau Industrial Continuous Batch Washing System components are backed by an industry-leading IndustrialCare™ warranty.

**INDUSTRIALCARE™**

*BUY WITH COMPLETE CONFIDENCE*  
INDUSTRY-LEADING FACTORY WARRANTY

## ENVIRONMENTALLY FRIENDLY

A division of Continental Girbau Inc., Girbau Industrial laundry products meet rigorous environmental and safety standards established by the International Organization for Standardization (ISO). Ever focused on laundry efficiency, Continental Girbau, the North American subsidiary of Girbau S.A., is a member of the U.S. Green Building Council (USGB), a 501(c)(3) nonprofit that developed the Leadership in Energy and Environmental Design (LEED) Green Building Rating System.



LAUNDRY  
DESIGN



3D  
RENDERINGS



PERFORMANCE  
STUDIES



UTILITY USAGE  
DETAILS

DISTRIBUTED BY:

**GIRBAU**  
INDUSTRIAL™

[www.girbauindustrial.com](http://www.girbauindustrial.com) • 800-256-1073  
2500 State Road 44 • Oshkosh, WI 54904 • 920-231-8222 • Fax 920-231-4666